

HYVA CYLINDER



714 07 681

type: **UMB 191-8-2380-K278-60-3M¹-HC**
 tipping weight: **7-22 ton**

page # 1 / 2

Stage diameters	front view cylinder		
191		A	245
169		ØC	215
149		G ¹	543
129		I	265
110		K ¹	278
91		M ¹	114
72		GP	100
53		ØD	65
		S	288
	ØW	60	
	X	45	

specifications

total stroke ¹	2380 mm
dry weight cylinder only	106 kg
total volume	33.6 L
working volume	30.9 L
maximum pressure	220 bar
maximum pump flow	23 l/min
maximum allowable thrust first stage ²	20.0 ton
oil inlet	3M ¹ BSP

technical notes

This cylinder is a lifting device only and may not be used as a structural member or be subjected to side load. Sideload and/or poor alignment might result in cylinder leakage. Hyva therefore strongly recommends the use of a cradle, even in instances where the cylinder only tips to the rear or to the side. The cylinder is painted black RAL9005. For suitable hydraulic oils, please refer to data sheet OIL-0011. For details of available brackets and cradles, please refer data sheet 0168RA05.

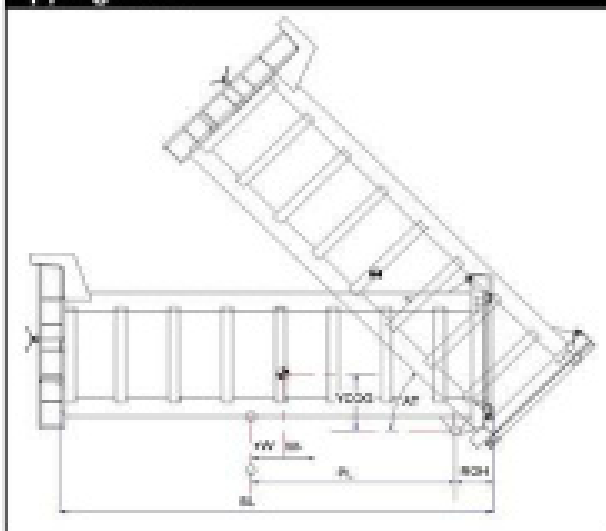
Detailed calculations can be made using the HYVA Tipper Program, freely available from tipper.hyva.com.

¹The cylinder thrust on the first stage (from the HYVA Tipper Program) must not exceed the maximum allowable (see specifications above).

¹including 20 mm pull-out (tol. -0; +30 mm)

²cylinder is delivered including oil inlet swivel adapter and cup

tipping view



tipping weight

PL	3100			mm	2750		
YCOG	700			mm	700		
ROH	700			mm	700		
BL	7600	6610	6130	mm	6900	6270	5760
CYL w.o.L COG (W)	0	350	630	mm	0	310	680
	Tipping weight for full stroke of 45°				Tipping weight for full stroke of 52°		
Tipping weight	7	9	10	ton	8	10	12
	Tipping weight for second last stage, up to 40°				Tipping weight for 2nd last stage, up to 46°		
Tipping weight	12	16	19	ton	14	19	22

Subject to change without notice, no rights reserved.

0048 1142888 / 14-03-04 / R07 AD

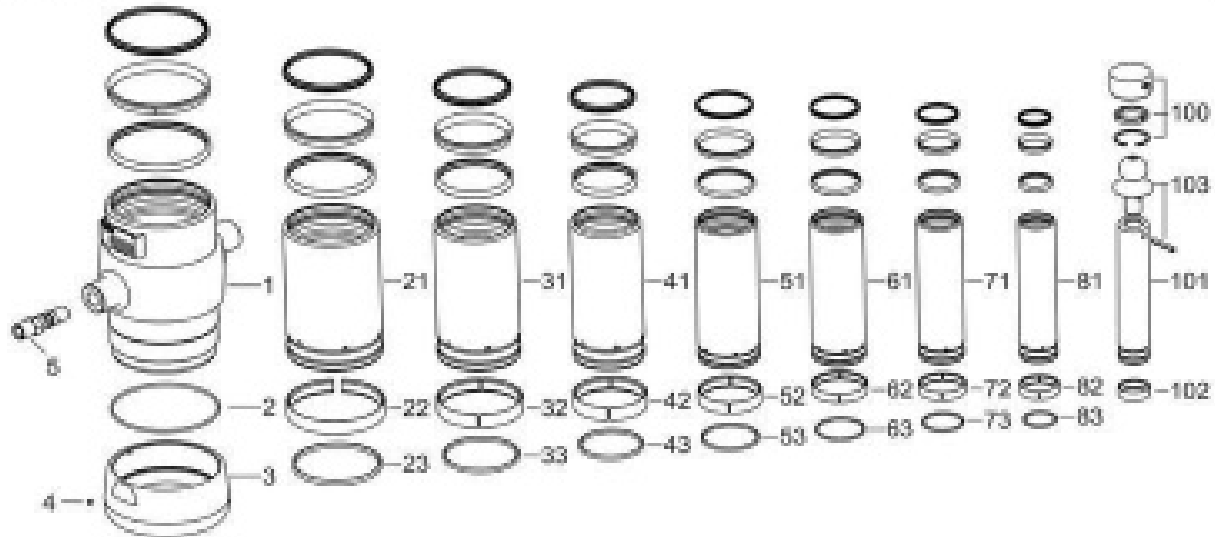
HYVA CYLINDER

714 07 681

type

LMB 191-8-2380-K279-60-3/4"-HC

page # 2 / 2



Spare part list

Pos.	Part no.	Description	Qty.
1	7300300	BASE 214-0388-40184	1
2	01020840	O-RING 208 X 4 X 75 SHORE	1
3	73101080	THREADED BOTTOM UM 214	1
4	01760571	LOCKING SCREW M6X12 INT. HEX. DIM 916	1
5	73103002	CS. INLET ADAPTOR UM 3/4"DT=O-RING	1
21	73007001	STAGE 101-0388-HC	1
22	71807181 K	SLIDER FL 181	1
23	71803181 K	LIFTRING FL 181-65	1
31	73008001	STAGE 108-0388-HC	1
32	71807182 K	SLIDER FL 182	1
33	71803182 K	LIFTRING FL 182-65	1
41	73009001	STAGE 118-0388-HC	1
42	71807142 K	SLIDER FL 142	1
43	71803142 K	LIFTRING FL 142-65P 180	1
51	73004001	STAGE 129-0388-HC	1
52	71807129 K	SLIDER FL 129/DF 129 (2 X 12)	1
53	71803129 K	LIFTRING FL 129-65P 129	1

Spare part list

Pos.	Part no.	Description	Qty.
61	73003001	STAGE 118-0388-HC	1
62	71807110 K	SLIDER FL 110/DF 110 (2 X 12)	1
63	71803110 K	LIFTRING FL 110	1
71	73002001	STAGE 091-0388-HC	1
72	71807081 K	SLIDER FL 081 (2 X 12)	1
73	71803081 K	LIFTRING FL 081	1
81	73001001	STAGE 073-0388-HC	1
82	71807072 K	SLIDER FL 072 (2 X 12)	1
83	71803072 K	INNER STOPRING/LIFTRING FL 072	1
100	01761000	48 5/16"X101 LMB D-65	1
101	73007000	PISTON P 003-0388-HC	1
102	71807003 K	SLIDER FL 003 (2 X 12)	1
103	73100040	SPHERE FLANGED UMS 85	1
	01760000	SPRING PIN 10800 100 3750 HEAVY DUTY	1

Seal kit complete

Part no.	Description
719 04 700K	Complete packset. Consists of all packsets with packset grease and pump.