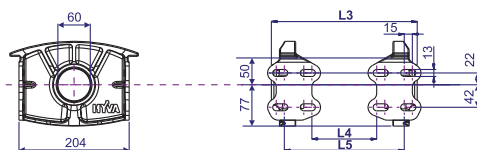


Note: Please verify quoted dimensions with your local Hyva subsidiary or agent prior to use

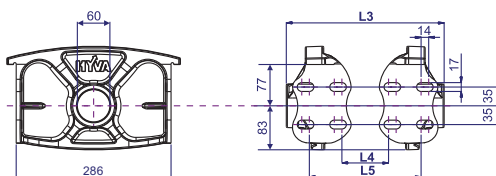
Chassis bracket for cylinder type: FC/FE 091/110



Cylinder	L3 (mm)	L4 (mm)	L5 (mm)
FC/FE 091	260	110	212
FC/FE 110	287	137	239

Bracket Type	Part no. Bracket	Mass (Kg)	Max. allowed thrust (kN)	Part no. Replacement bush
Maintenance free	015 06 151	4.1	235	017 94 240

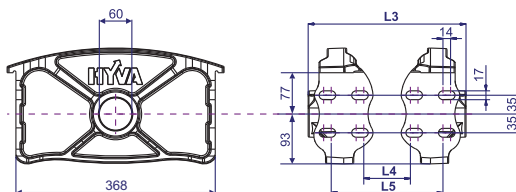
Chassis bracket for cylinder type FC/FE 110/118/129/137/149



Cylinder	L3 (mm)	L4 (mm)	L5 (mm)
FC/FE 110	308	103	223
FC/FE 118	325	120	240
FC/FE 129	346	141	261
FC/FE 137	346	141	261
FC/FE 149	346	141	261

Bracket Type	Part no. Bracket	Mass (Kg)	Max. allowed thrust (kN)	Part no. Replacement bush
Maintenance free	015 06 161	7.7	235	017 94 240
Greased	015 06 162	7.7	295	017 94 020
Greased RS20	015 06 163	7.5	295	017 94 012

Chassis bracket for cylinder type FC/FE 137/149



Cylinder	L3 (mm)	L4 (mm)	L5 (mm)
FC/FE 137	346	141	261
FC/FE 149	346	141	261

Bracket Type	Part no. Bracket	Mass (Kg)	Max. allowed thrust (kN)	Part no. Replacement bush
Maintenance free	015 06 181	10.6	235	017 94 240
Greased	015 06 182	10.5	440	017 94 020
Greased RS20	015 06 183	10.3	295	017 94 012

General information

For all chassis brackets use:

- Bolts M16x1.5 Property Class 8.8 or higher
- Self-locking nuts M16 Property Class 8 or higher
- Washer 17x30 over slotted holes in the bracket

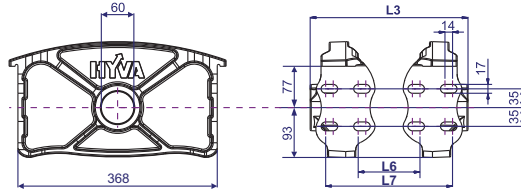
Bolt kits are available:

- Q005: 16 bolts M16x50, nuts and washers for chassis brackets (2.3 kg)

Note:

- Brackets are painted black (RAL9005 / gloss 25%)
- Weight can vary as per casting process
- Greased versions includes M8x1 grease nipple
- For mounting, see instructions CYL-0030 or CYL-0031
- For bush replacement, see instruction CYL-0040

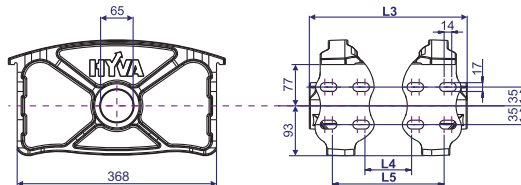
Chassis bracket for cylinder type FC/FE 157/169/179/191



Cylinder	L3 (mm)	L6 (mm)	L7 (mm)
FC/FE 157	388	211	331
FC/FE 169	388	211	331
FC/FE 179	388	211	331
FC/FE 191	388	211	331

Bracket Type	Part no. Bracket	Mass (Kg)	Max. allowed thrust (kN)	Part no. Replacement bush
Maintenance free	015 06 181	10.6	235	017 94 240
Greased	015 06 182	10.5	440	017 94 020
Greased RS20	015 06 183	10.3	295	017 94 012

Chassis bracket for cylinder type FC/FE 214



Cylinder	L3 (mm)	L4 (mm)	L5 (mm)
FC/FE 214	413	211	331

Bracket Type	Part no. Bracket	Mass (Kg)	Max. allowed thrust (kN)	Part no. Replacement bush
Maintenance free	015 06 185	10.4	255	017 94 245
Greased	015 06 186	10.5	440	017 94 025

General information

For all chassis brackets use:

- Bolts M16x1.5 Property Class 8.8 or higher
- Self-locking nuts M16 Property Class 8 or higher
- Washer 17x30 over slotted holes in the bracket

Bolt kits are available:

- Q005: 16 bolts M16x50, nuts and washers for chassis brackets (2.3 kg)

Note:

- Brackets are painted black (RAL9005 / gloss 25%)
- Weight can vary as per casting process
- Greased versions includes M8x1 grease nipple
- For mounting, see instructions CYL-0030 or CYL-0031
- For bush replacement, see instruction CYL-0040